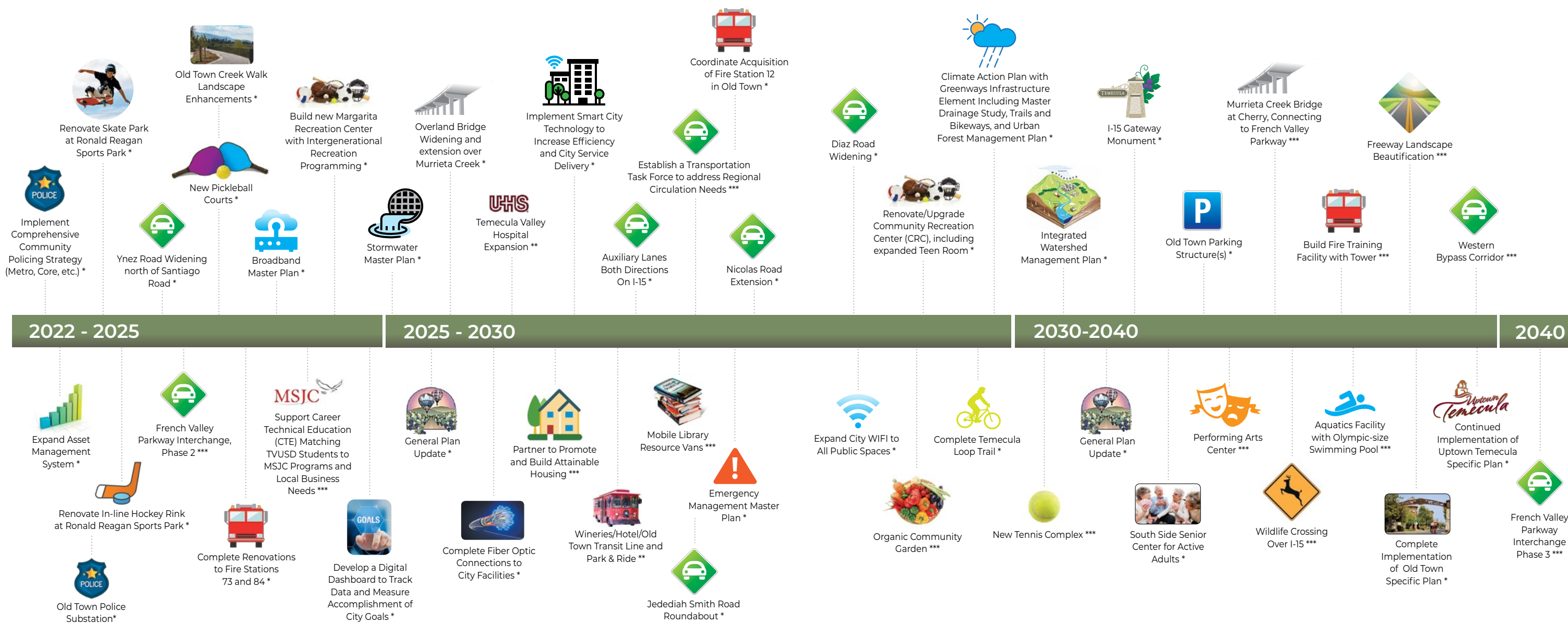


OUR 7 CORE VALUES

Each Core Value contributes to our overall *Quality of Life*. The diagram below is the compass by which we measure the strength of our goals as we develop the Citizens' 20-Year Priorities Timeline to the right.



Building *Greatness*
Maintaining *Excellence*

* City Development
 ** Private Development
 *** Public-Private Development or Multi-Public Agency Development
 NOTE: Timeline will change due to budget considerations and community priorities. Project placement on the timeline indicates approximate initiation/completion within a 5 to 10 year period, not the exact year it will take place.